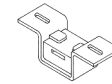




Tube Technologies Inc.
1555 Consumer Circle
Corona, CA 92880
(951) 371-4878
www.ttiexhaust.com

O.E. STYLE TAILPIPE HANGER RECEPTACLES
Included with Tailpipes.
• Includes Hardware
• Part # TPH-E2530



1970-1974 E-body Challenger Exhaust System

- 2.5+system . part # E25MNM-CH
- 3.0+system . part # E30MNM-CH

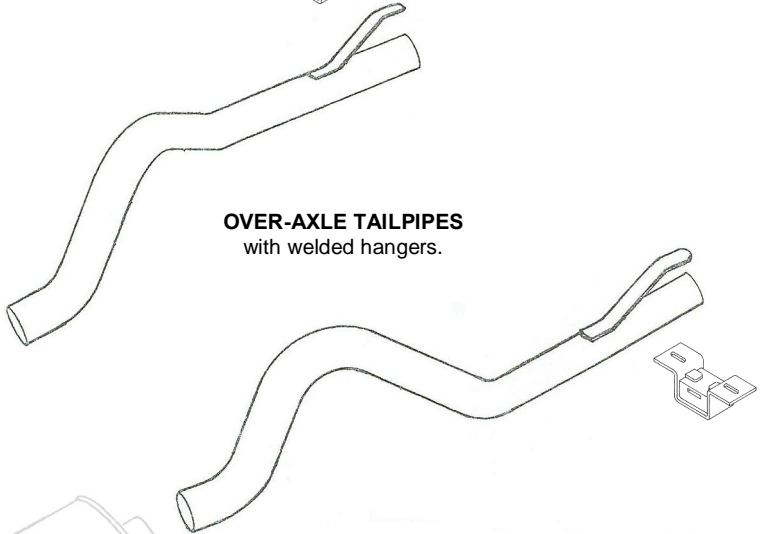
MUFFLERS

Opting to use mufflers other than Dynomax Super Turbos may require modification to the muffler slips, (cutting & welding) for proper fit and alignment due to the muffler case length and width differences.

System designed using Dynomax Super Turbo mufflers

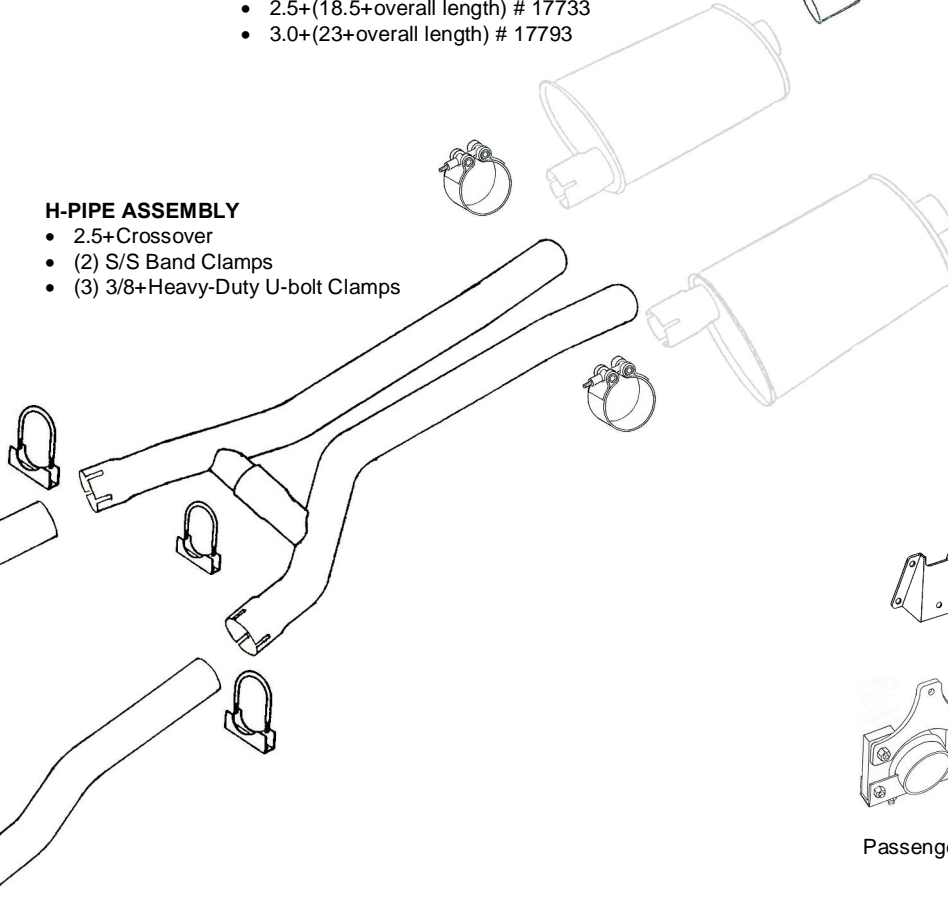
- 2.5+(18.5+overall length) # 17733
- 3.0+(23+overall length) # 17793

OVER-AXLE TAILPIPES
with welded hangers.



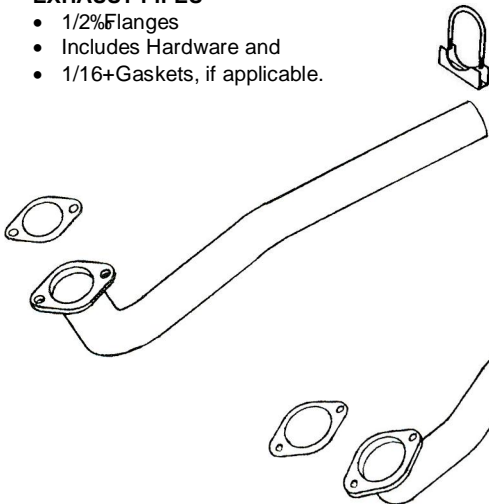
H-PIPE ASSEMBLY

- 2.5+Crossover
- (2) S/S Band Clamps
- (3) 3/8+Heavy-Duty U-bolt Clamps



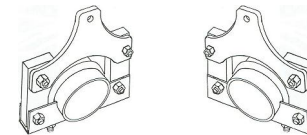
EXHAUST PIPES

- 1/2+Flanges
- Includes Hardware and
- 1/16+Gaskets, if applicable.



MUFFLER BODY BRACKETS
If your application is not equipped with Muffler Body Brackets, a set will be required.

- Sold separately - Part # E2530BB-2



Passenger-side

Driver-side

MUFFLER HANGERS

- Included with system.
- 2.5+Part # MH-E25HA
 - 3.0+Part # MH-E30HA