



Tube Technologies Inc.
 1555 Consumer Circle
 Corona, CA 92880
 (951) 371-4878
www.ttiexhaust.com

O.E. STYLE TAILPIPE HANGER RECEPTACLES

- Included with Tailpipes.
- Includes Hardware
 - Part # TPH-AB2530

1962-1965 "B"-body Wagon Exhaust System

- 2.5" system – part # XB25MW6265W
- 3.0" system – part # XB30MW6265W

DYNOMAX SUPER TURBO MUFFLERS
 Comes standard with TTI systems.

- 2.5" - Overall length 25.5" / Part # 17748
- 3.0" - Overall length 23" / Part # 17793

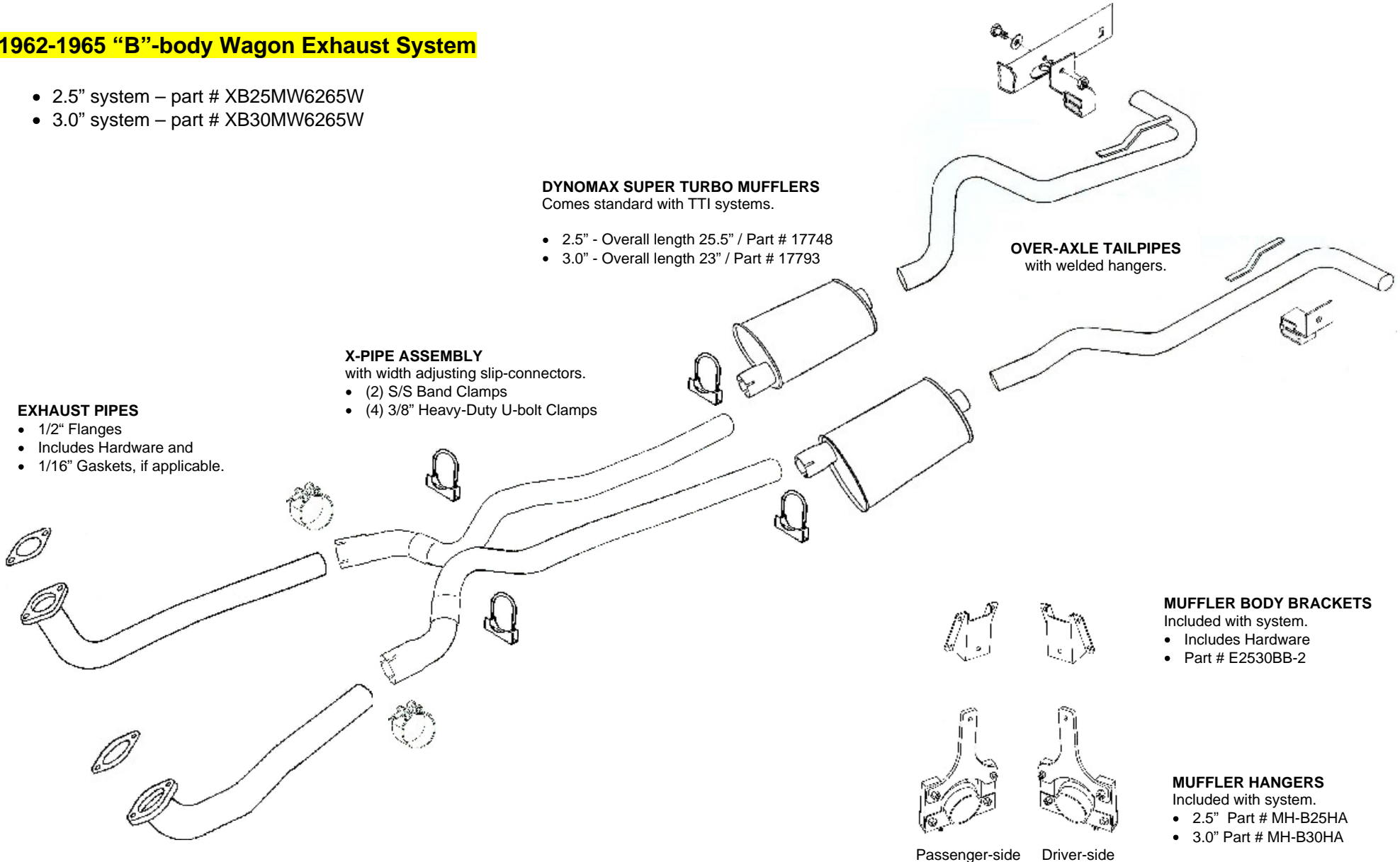
OVER-AXLE TAILPIPES
 with welded hangers.

X-PIPE ASSEMBLY
 with width adjusting slip-connectors.

- (2) S/S Band Clamps
- (4) 3/8" Heavy-Duty U-bolt Clamps

EXHAUST PIPES

- 1/2" Flanges
- Includes Hardware and
- 1/16" Gaskets, if applicable.



MUFFLER BODY BRACKETS

- Included with system.
- Includes Hardware
 - Part # E2530BB-2

MUFFLER HANGERS

- Included with system.
- 2.5" Part # MH-B25HA
 - 3.0" Part # MH-B30HA

Passenger-side Driver-side