



Tube Technologies Inc.  
 1555 Consumer Circle  
 Corona, CA 92880  
 (951) 371-4878  
[www.ttiexhaust.com](http://www.ttiexhaust.com)

**O.E. STYLE TAILPIPE HANGER RECEPTACLES**

- Included with Tailpipes.
- Includes Hardware
  - Part # TPH-AB2530

**1966-1967 "B"-body Exhaust System**

- 2.5" system – part # XB25MW6667
- 3.0" system – part # XB30MW6667

**DYNOMAX SUPER TURBO MUFFLERS**  
 Comes standard with TTI systems.

- 2.5" - Overall length 25.5" / Part # 17748
- 3.0" - Overall length 27" / Part # 17769

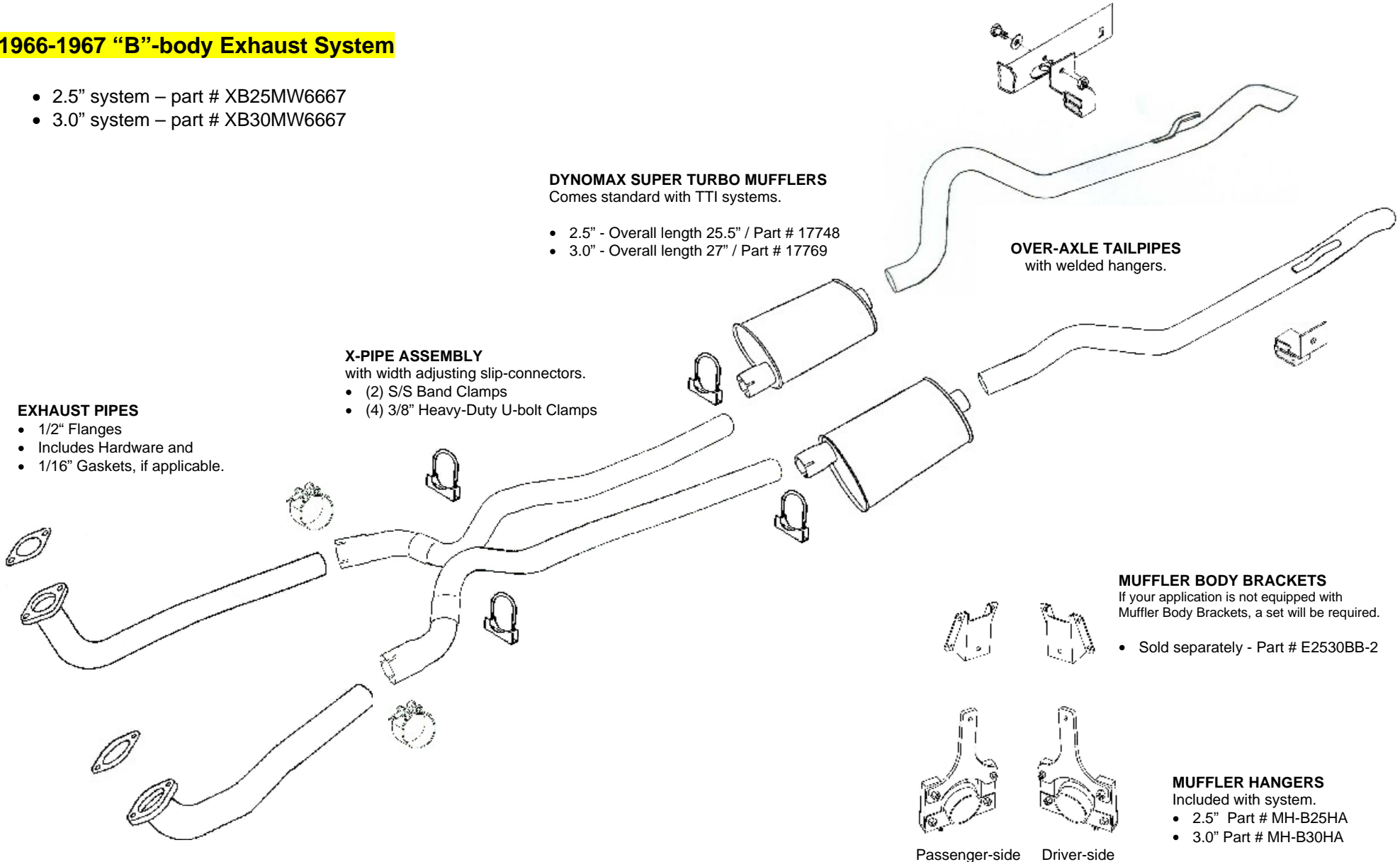
**OVER-AXLE TAILPIPES**  
 with welded hangers.

**X-PIPE ASSEMBLY**  
 with width adjusting slip-connectors.

- (2) S/S Band Clamps
- (4) 3/8" Heavy-Duty U-bolt Clamps

**EXHAUST PIPES**

- 1/2" Flanges
- Includes Hardware and
- 1/16" Gaskets, if applicable.



**MUFFLER BODY BRACKETS**

If your application is not equipped with Muffler Body Brackets, a set will be required.

- Sold separately - Part # E2530BB-2

**MUFFLER HANGERS**

Included with system.

- 2.5" Part # MH-B25HA
- 3.0" Part # MH-B30HA

Passenger-side    Driver-side